

Bigler February Newsletter

HS/HSSAP

Miss Darla...class Tues. Wed. Thurs. Fri. 8:30-12
Miss Stephanie...class Mon. Tues. Wed. Thurs. Fri. 8:45-1:45
Miss Amber...class Mon. Tues. Wed. Thurs. Fri. 9:30-2:30
Miss Margo...class Tues. Wed. Thurs. Fri. 12-3:30

- **No school February 12, 15, 22**

- Lesson themes...

- Miss Darla & Miss Margo...clothes
- Miss Amber...clothes (Miss Amber is on leave)
- Miss Stephanie...building

- Weather is cold! We enjoy playing outside when the temperature is “real feel” of 25 degrees or higher...please be sure to send your child with a coat and hood/hat. Sneakers are also best for play. If your child wear boots to school, please send sneakers to change into. –
- Make sure you send extra- long pants and long sleeve shirt to keep at the school in case of accidents and messes.
- Please make sure you are taking children's temperatures before sending them to school and keeping children home who are sick, especially exhibiting Covid-19 symptoms (i.e. cough, fever, difficulty breathing, vomiting, diarrhea, and runny nose). Thank you.



PBIS/Sanctuary Highlights

- Continue talking to you child about what it means to be safe, kind, and respectful.



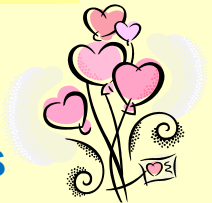
Reminders to Parents

- Visit us on the website: www.cenclear.org
- The next Policy Council Meeting is February 16, 2020
- Continue to log your volunteer hours and turn in your log by the end of the month
- Keep an extra set of clothes in your child's backpack
- Ask your teacher to connect you to Ready Rosie!

This Month's Highlights

- Make sure you are sending your folder back to school with your child daily. This folder is how we send home important papers and artwork.

Upcoming Events



- We will have a PCC activity in February. Families and children will make valentines that we will deliver to a local nursing home.

Student Acts of Kindness!

The following students are being recognized for the good things that they do:

